

*Explore with us ...*



Est.

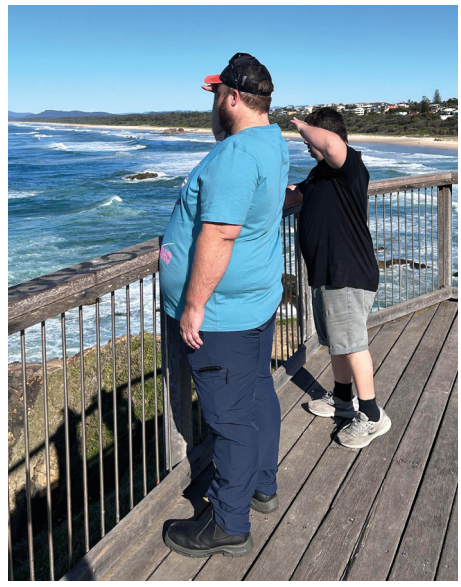
*Witmore*

1958

GETAWAYS

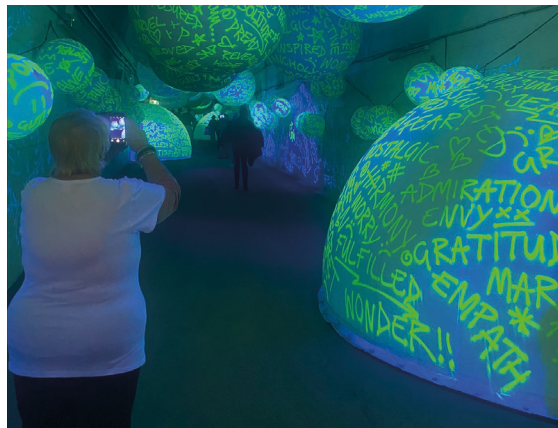
**2024**





SAY YES TO NEW  
*adventures*

  
 Est. Witmore 1958  
 GETAWAYS



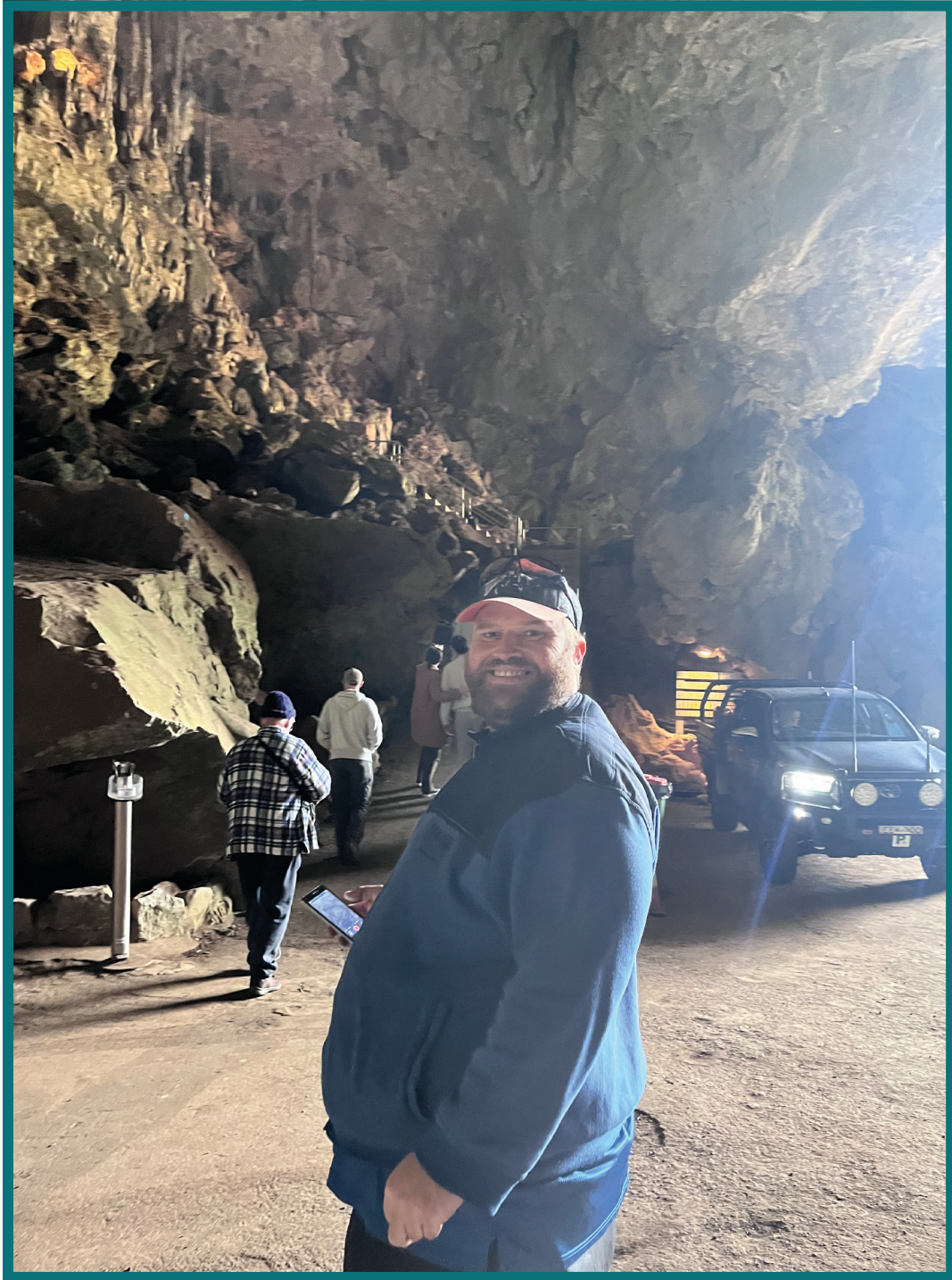
# TESTIMONIALS



## ALEX - SYDNEY

I LOVED MY TRIP TO SYDNEY. THE APPLE STORE WAS A GREAT EXPERIENCE FOR ME TO INDULGE MY LOVE OF TECHNOLOGY. I ALSO VISITED A CAT CAFÉ AND SPENT TIME WITH MY FAVOURITE ANIMALS.

# TESTIMONIALS



## DAVE - BLUE MOUNTAINS

I ENJOYED THE SCENIC RAILWAY AND LOOKING  
IN THE CAVES. IT WAS FUN STAYING AT THE  
BED AND BREAKFAST.

# TESTIMONIALS



## MARIA - VIVID

I LIKED THE SEA LIFE AQUARIUM AND  
THE LIGHT TUNNEL.



## **KERRY - SALAMANDER BAY**

I LOVED PLAYING BINGO, WENT TO MY SISTER'S HOUSE AND WENT SHOPPING. IT WAS LOVELY AND BEAUTIFUL.



## ABOUT US

Our story began more than 60 years ago when people with a disability had few opportunities. Witmore was created from the voices of two families in the Singleton region in 1958; the Witt and the Moore families.

These two courageous families dared to dream big for their children; they rallied together and opened the first school in our region for children with a disability. Then as these children grew older, they opened the first supported workshop. Today, Witmore continues to walk in their footsteps, and we now offer a diverse range of services, including:

- Community Programs
- Social weekend events
- Supported Holidays
- Respite care
- 1:1 Skill building supports
- Personal care
- Supported employment including; Workshop and Riverside Kiosk
- NDIS services and Coordination of Supports

## OUR VISION

To have People feel Valued, Supported, Empowered and Celebrated!





# OUR WITMORE GETAWAY GUIDE 2024



**FORSTER**



**VIVID LIGHT FESTIVAL SYDNEY**



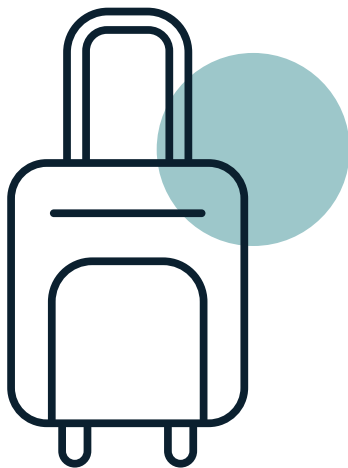
**COMIC CON & GAMING SYDNEY**



**TAMWORTH**



**UMINA BEACH**



# FORSTER



**MONDAY 25TH - THURSDAY 28TH MARCH**

Forster presents the best of the life aquatic, with boating, fishing, paddling, and surfing all part of its laid-back charm. The town makes a great base for exploring including whale and dolphin watching from some of the incredible lookouts. You can do as much or as little as you want, with plenty of beautiful beaches to just sit and relax.

For more information visit: [www.visitnsw.com.au](http://www.visitnsw.com.au)



## BEACHES

Visit the vast stretch of beaches along Forster. Enjoy a swim in the ocean bath and then explore the sea life in the adjacent rock pools. Take a stroll in the afternoon with the setting sun on the ocean horizon or enjoy the view from one of the many lighthouses in the area, pure relaxation!

## FISHING CHARTER

Fish for snapper, morwong, flat head, teraglin, pearl perch, leather jackets, bonito, small tuna and common reef fish. It will be a great day on the water for those wanting to experience fishing for the first time in relatively calm water. Rods, reels spooled, and bait are provided. A NSW fishing license is provided whilst fishing.

## SHOPPING

Enjoy wandering around the streets of Forster and visiting the array of different coastal boutiques. We will also visit the shopping centers to have a look around, and perhaps take a timeout to get your nails done or have a massage, this trip is all about you.



4 days/3 nights



Monday 25th March - Thursday 28th



1:1 \$4291.05

1:2 \$2767.53

PRICES SUBJECT TO CHANGE BASED ON NDIS PRICE GUIDE

# VIVID - SYDNEY



**MONDAY 27TH – WEDNESDAY 29TH MAY**

Vivid is the annual celebration of creativity, innovation, and technology, transforming Sydney! Vivid lights illuminate the city and its urban landscapes in unexpected ways! Vivid has the longest continuous light walk ever, running uninterrupted from Sydney Opera House to Central Station. Glowing light arms and vibrant 3D projections transform the city's iconic architecture.

Vivid Sydney also boasts a range of music artists and delicious food to enjoy while taking in the amazing lights!

For more information visit: [www.vividsydney.com](http://www.vividsydney.com)



## LUNA PARK

Embark on a day's adventure to the iconic Luna Park. Catch a ferry from Darling Harbour over to Luna Park to check out the sideshow ally, the showbag stand, and the selection of food and drinks before embarking on some thrill-seeking rides!

## VIVID HARBOUR CRUISE

Admire the lights of Vivid Festival from the perfect vantage point as you cruise around Sydney Harbor on a catamaran. Enjoy the freedom to bring your own alcoholic drinks, then sit back and relax as you marvel at the city light up with color.

## PADDYS MARKETS

A bustling market in the heart of the City and right beside Chinatown offers a variety of lunchtime takeaway or eat-in food options that are sure to have you coming back for more. Paddy's Haymarket is for the curious of mind and also for those who are budget-conscious. It operates like a traditional market and offers imported and local women's fashion, kid's clothes, hair accessories, jewelry as well as gifts, souvenirs, gadgets, and lots more.



3 days/2 nights



Monday 27th May - Wednesday 29th May



1:1 \$2380.29

1:2 \$1332.87

PRICES SUBJECT TO CHANGE BASED ON NDIS PRICE GUIDE

# COMIC CON & GAMING SYDNEY



**SATURDAY 22ND - SUNDAY 23RD JUNE**

Ever wanted to meet your favourite superhero or comic book star? Now is your chance to join us at this year's Supernova Comic Con & Gaming event in Sydney.

We will be getting involved in all the events and activities, including gaming tournaments, throughout the day!

For more information visit: [www.supanova.com.au](http://www.supanova.com.au)



# SUPANOVA COMIC CON & GAMING

Supanova Comic Con & Gaming has been the welcoming home of Australia's pop culture fandom since 2000; fans inspired by imaginary worlds emanating from comics, sci-fi, fantasy, anime, gaming, nostalgia, and literature have been able to come together to celebrate. A place to rejoice in cosplay ('costume role-'play') in expressing your inner geek, your inner child.

## COSPLAY

Dress up in your favourite costumer for this event, there will be heaps of awesome things for you to see and do! You may even be spotted on the day and win a prize for one of the best dressed.

## SPECIAL GUEST PANEL

Special guests to be announced: attend question & answer panels and find out more about some of your favourite authors and actors! A once-in-a-lifetime opportunity to meet your heroes!

## PHOTO OPPORTUNITIES

Special guests to be announced: if you are a big fan there are plenty of photo opportunities and signing taking place over both days! At an additional cost.



2 days/1 nights



Saturday 22nd – Sunday 23rd June



1:1 \$2991.31

1:2 \$1796.77

PRICES SUBJECT TO CHANGE BASED ON NDIS PRICE GUIDE

# TAMWORTH



**WEDNESDAY 14TH - FRIDAY 16TH AUGUST**

Tamworth, the country music capital of Australia is home to many great things. There is a very warm and welcoming small-town feel to this sprawling city. Tamworth is located at the heart of the richly agricultural New England region, there are lots of things to do and see, with plenty of adventure on the horizon.

Enjoy the country air and all Tamworth has to offer!





## THE BIG GOLDEN GUITAR

Located in the Country Music Capital, the Big Golden Guitar stands prominently on the New England Highway on the southern approach to Tamworth, it's the perfect stop-off on your visit. Inside the information centre is a wax and guitar museum to explore and learn some country history. With a café inside to pop into for a coffee on the way!

## THE POWERHOUSE MOTORCYCLE MUSEUM

The Powerhouse Motorcycle Museum in Tamworth, NSW is a must see for any bike enthusiast. The museum houses a private collection of over 50 motorcycles in pristine working order from the 50s, 60s, 70s and 80s.

## DAVE O'NEIL – COMEDY SHOW AT THE CAPITOL THEATRE TAMWORTH

Dave O'Neil is taking his brand-new stand-up show, Overweight Lightweight on the road after playing to sold out audiences across the Melbourne International Comedy Festival and receiving some spectacular reviews. His cheeky brand of humour has made him one of Australia's most loved comedians.



3 days/ 2 nights



Wednesday 14th August – Friday 16th August



1:1 \$2380.29

1:2 \$1332.87

PRICES SUBJECT TO CHANGE BASED ON NDIS PRICE GUIDE

# UMINA BEACH



## MONDAY 4TH - WEDNESDAY 6TH NOVEMBER

As little as you like or as much as you like!

This trip is really focused on enjoying the beach and the awesome holiday resort.

With only one planned activity this holiday is all about recharging the batteries and chillaxing!



## AUSTRALIAN REPTILE PARK

The Australian Reptile Park is a hands-on, interactive zoo, based in Somersby on the beautiful NSW Central Coast in Australia. It's the best place in Australia to interact with native animals and catch exciting wildlife shows!

Our rich and fascinating history began with the late and great Eric Worrell. What started with humble beginnings in 1958 has now grown into one of Australia's premier tourist attractions.

## UMINA BEACH NRMA HOLIDAY RESORT

Located in Umina Beach, NRMA Ocean Beach Holiday Resort is on the waterfront. You can look forward to free water park access, a corner local shop, and private access to the white sandy beaches. There are plenty of perks such as outdoor pools, bike hire, tennis courts and putt-putt golf!



3 days/2 nights



Monday 4th November - Wednesday 6th November



1:1 \$2380.29

1:2 1332.87

PRICES SUBJECT TO CHANGE BASED ON NDIS PRICE GUIDE

# HOW DO SUPPORTED HOLIDAYS WORK?

Witmore Supported holidays are quoted through the NDIS Price Guide using the 'Access Community' hourly rate.

Witmore will quote prior to the holiday, so you know precisely what your NDIS plan will be charged.

## WHAT DOES THE NDIS COVER?

Participant NDIS funding will cover the cost of the support workers to support them during the day/night and overnight holiday.

## WHAT WILL MY OUT-OF-POCKET EXPENSES BE?

Participants will need to pay for the following out-of-pocket costs:

- Accommodation
- Meals/drinks
- Entry tickets for any paid attractions
- Spending money

We will provide a rough estimate of these costs before the holiday. We are happy to assist participants in budgeting and saving for their trip away.



## HOW DOES THE ACCOMMODATION WORK?

Witmore will source affordable and accessible accommodation. We divide the cost of the accommodation by the amount of participants in the room, for example:

*John and James are going on supported holiday to Bathurst. Their disability provider has booked a beautiful 3-bedroom apartment. John and James will have a support worker with them in their accommodation to provide 24-hour care.*

*The room cost is \$350 per night, this is divided between John and James, and each will pay \$125 to their disability provider out of their own money to cover the cost.*

## DO I HAVE TO SHARE A ROOM WITH SOMEONE?

We will never make you share a room with someone, you will always have a private room with a door.

Depending on your funding ratio, you may have to share the living space and bathroom with others.

If you want accommodation just for yourself, you would be billed at a 1:1 rate and the accommodation would be slightly more expensive, but we are happy to make this work, it's your **CHOICE!**



## WHAT IF MY DISABILITY PROVIDER NEEDS TO CANCEL OR RESCHEDULE?

There may be occasions where supported holidays need to be canceled or rescheduled. Circumstances may include pandemics, severe weather, and insufficient attendees.

In these circumstances, Witmore will try our very best to give all participants a minimum of 3 weeks' notice. All monies that can be retrieved will be refunded to the participant, or Witmore can hold on to the funds in the event the supported holiday is able to be rescheduled and the participant wishes to attend the new scheduled date.

## WHAT IF I NEED TO CANCEL?

Witmore understands that things happen....

If you need to cancel Witmore will follow the NDIA cancellation policy, which states we need a minimum 7 days' notice. If cancellation happens after this time, we will charge for the support services as staff rostering will have been set already.

Unfortunately with accommodation, we may not be able to get you a refund on your portion paid, it will depend on the accommodation's specific cancellation policies, Witmore will always endeavor to do our best.



## LIMITATION OF LIABILITY

Subject to any responsibilities implied by law and which cannot be excluded, we are not liable to you for any losses, damages, liabilities, claims and expenses (including but not limited to legal costs and defense or settlement costs) whatsoever arising from any incident occurring whilst on a holiday, whether in contract, including negligence, statute or otherwise.

## TRAVEL INSURANCE

Witmore doesn't provide services for participants to obtain travel insurance, this is a personal choice, although we do think it's a good idea!

Travel insurance will cover the minimum loss of deposit, other benefits may include loss or damage to personal baggage and loss of money, medical expenses, etc.



# HOW TO BOOK MYSELF ON ONE OF THESE AWESOME HOLIDAYS?

Booking is simple!

All you need to do is get in contact with our Community and Programs Team leader, Amy, to secure your spot!

All Supported Holidays will be capped at a certain amount to ensure we can offer a high level of support to those attending.

So what are you waiting for, contact Amy today on:

**PH:** (02) 65722 578

**MOBILE:** 0493 098 336

**EMAIL:** [astone@witmore.org.au](mailto:astone@witmore.org.au)

Once you've secured your spot, more specific information on activities, costs and accommodation will be communicated to you so you are 100% informed of what will happen!





# WHAT IF I WANT TO BOOK A HOLIDAY THAT ISN'T LISTED IN THIS BROCHURE?

Witmore is a **FIRM** believer in participants having **CHOICE AND CONTROL**.

If you had your heart set on a specific holiday destination, that isn't listed in our 2024 brochure, then let us know!

We are more than happy to cost, and tailor Supported Holidays specific to your holiday bucket list!



